



**Koch Filter Corporation**  
Filtration Products Crafted with Pride

## ICF-13 *High efficiency blended paper media with Nano Fiber*

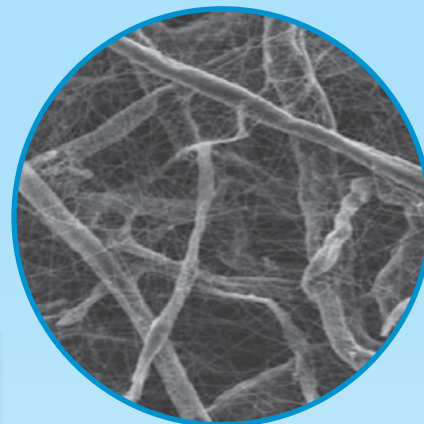
ICF-13 is a blended Cellulose/Polyester paper filter media with Nano Fiber, an Acrylic resin system. High moisture resistance, excellent capacity and cake release. A merv 13/14 performance rating makes this media ideal for use in pulse systems.

Basis Weight	81lbs/3000 ft <sup>2</sup>
Caliper	30 mils @ 2.7 psi
Air Permeability	30 cfm/ft <sup>2</sup> @ 0.5 wc
Resin Content	20 %
Mullen Burst Dry	40 psi
Mullen Burst Wet	35 psi
Resin System	Acrylic

### Test Results

Airflow Rate (CFM)	500
Initial Resistance (in WG)	0.53
E1 (%) Initial Efficiency 0.30 - 1.0 µm	84
E2 (%) Initial Efficiency 1.0 - 3.0 µm	97
E3 (%) Initial Efficiency 3.0 - 10.0 µm	100
MERV*	14

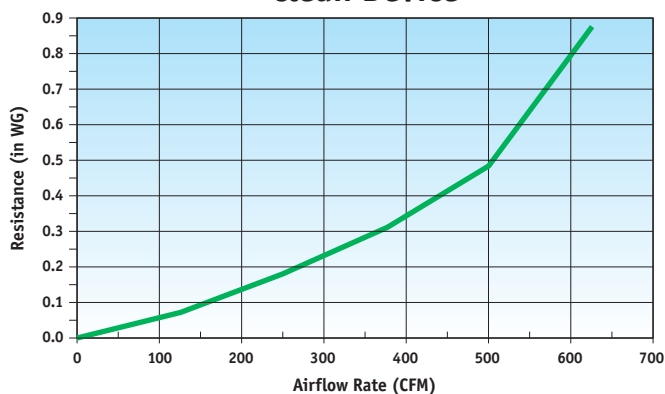
\* Minimum Efficiency Reporting Value based on ASHRAE Test Standard 52.2-2007.



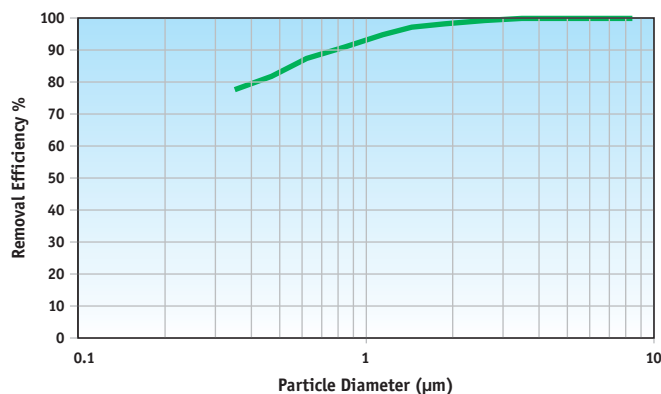
### Typical Applications

- Gas Turbine
- Grain Dust
- Paper Dust
- Tobacco
- Wood Working

**Air Flow vs Resistance  
Clean Device**



**Initial Particle Size Removal Efficiency**



**Corporate Offices**  
P.O. Box 3186 • 625 West Hill Street (40208)  
Louisville, KY 40201 • 502.634.4796  
Fax: 502.637.2280 • E mail: info@kochfilter.com  
www.kochfilter.com

© January 2012 Koch Filter Corporation



Look for the Koch Green icon! Whenever you see the Koch Green icon, we are identifying a product that meets or exceeds our criteria in one or more of the following categories: **Earns LEED Points, Reduces Energy Costs, Extends Filter Lifecycles, Conserves Resources, and Improves Indoor Environmental Quality.**