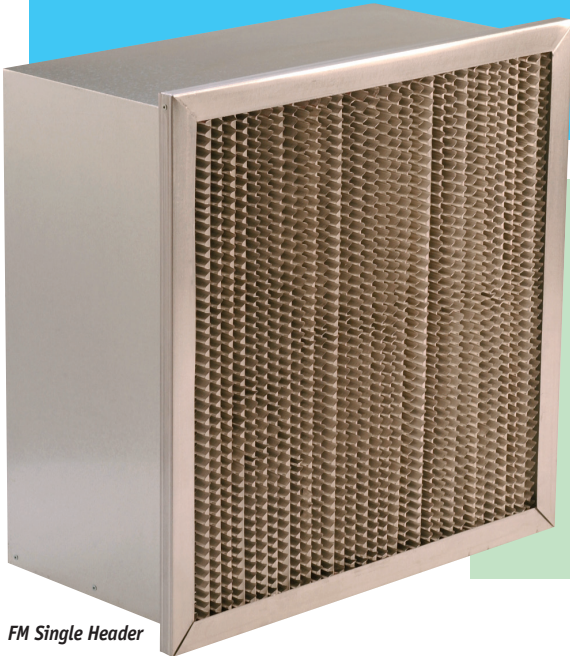




**Koch Filter Corporation**  
Filtration Products Crafted with Pride

# LC Rigid Filter™

## High Efficiency Extended Surface Air Filter



FM Single Header

The LC Rigid Filter is constructed with a sturdy steel external frame for use in light-to-moderate commercial and industrial applications. The media pack, composed of graded density microfiberglass paper and safe-edge aluminum separators, contains slightly less media than the Koch Multi-Cell\*. This reduced media area makes the LC Rigid an ideal product for systems in which a rigid configuration is preferred, yet initial purchase price is of paramount concern. LC Rigid Filters are presently used in a wide range of applications such as variable-air-volume (VAV) and high humidity environments. The filter is offered in three standard face sizes and two efficiency ranges (90-95% MERV 14 and 60-65% MERV 11).

**Three header configurations are available, FM Single Header, SBM Double Header, and NHM No Header.**

*\*For high velocity or extremely dirty environments, please see the Koch Multi-Cell and Maxi-Cell.*

### Product Performance Data

Nominal Size	Air Flow Capacity (CFM) @ 500FPM	Initial Resistance (inches W.G.) @ 500FPM		Recommended Final Resistance (inches W.G.)	Media Area Sq. Ft.	
		90-95%	60-65%		FM & SBM	NHM
24x24x12	2000	.70	.44	1.5	90	105
20x24x12	1650	.70	.44	1.5	75	88
12x24x12	1000	.70	.44	1.5	45	53

- Notes:
1. Actual Face dimensions are 5/8" less than nominal. Actual depth is 1 1/2".
  2. All performance data is based on current ASHRAE Test Standard 52.2-2007.
  3. Performance tolerances conform to section 7.4 of ARI Standard 850-93.
  4. LC Rigid Filters are UL Class 1 listed.
  5. Operating temperatures Limits (Continuous) 350 degrees F.

#### Corporate Offices

P.O. Box 3186 • 625 West Hill Street (40208)  
Louisville, KY 40201 • 502.634.4796  
Fax: 502.637.2280 • E mail: info@kochfilter.com  
www.kochfilter.com

#### Regional Sales Offices/Distribution Centers

Atlanta, GA • Detroit, MI • East Greenville, PA\* • Houston, TX\* • Indianapolis, IN  
Kansas City, MO • Louisville, KY\* • Madbury, NH • Nashville, TN • Rancho Cucamonga, CA\*

\*Denotes manufacturing site.

© OCTOBER 2009 KOCH FILTER CORPORATION

**Koch Filter Corporation** maintains a policy of continuous product research and improvement, and retains the right to change product specification and design without notice.



Look for the Koch Green icon! Whenever you see the Koch Green icon, we are identifying a product that meets or exceeds our criteria in one or more of the following categories: Earns LEED Points, Reduces Energy Costs, Extends Filter Lifecycles, Conserves Resources, and Improves Indoor Environmental Quality.

Distributed by

**Koch Filter Corporation...Durable. Reliable. Versatile.**

Bulletin No. K-12002