

OdorKleen 250™

High Efficiency MERV 8
Carbon/Particulate Filter



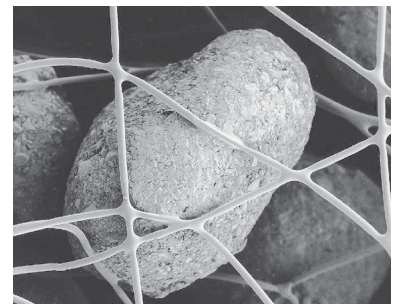
Features

- Patented, flexible CarbonWeb® Media-carbon will not settle
- MERV 8 performance rating (ASHRAE Test Standard 52.2-2007)
- Great particulate efficiency
- Superior odor removal
- Low pressure drop
- Virtually no dusting

New CarbonWeb® Media—Superior Performance

OdorKleen 250 offers superior performance in gaseous and odor adsorption, as well as excellent particulate filtration. This “combination” product contains 250gsm of carbon product attached to a high efficiency cotton-polyester media blend of granular activated carbon and activated alumina impregnated with potassium permanganate.

The Gas-Phase Filtration Media “CarbonWeb”® technology is an efficient, carbon filled media fibers that provide low resistance and a high capacity. Its gas phase, 60% activity granular activated carbon has nearly five million square feet of surface area per pound. CarbonWeb® is a patented process media. Either alone or in combination the media fibers is filled with odor control granular activated carbon and other types of absorbents for gaseous pollutants. The result is high-efficiency filtration for a variety of challenges. Unlike many competitors’ products, the “flexible carbon filled media” bonds between the fiber in the OdorKleen 250 and only uses approximately 1% of the carbon’s surface area. This maximizes the exposure of the gas contaminant to the carbon.



Gas contaminants must pass through tortuous pathways coming in intimate contact with the carbon. The fibers anchor themselves to the carbon using only 1% of the carbon’s surface helping to maximize the contaminant’s exposure.

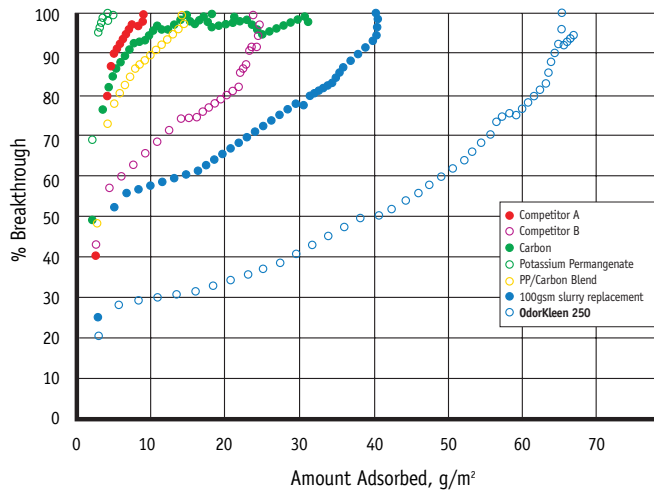
The $\frac{3}{8}$ " light/medium duty media layer used to capture the particulate contaminants is made up of a cotton-polyester blend that is carbon filled fibers. The combination of the two distinct medias give the filter an efficiency rating of MERV 8, while maintaining a low pressure drop unlike competitors’ products.

The OdorKleen 250 can be used in several types of applications:

- Chemical Storage
- Laboratories
- Museums and archives
- Pharmaceutical
- Hospitals
- Airports
- Industrial Facilities
- Commercial Office Buildings
- Sports Arenas
- Smoking Lounges
- Casinos
- Laminate Adhesives
- IAQ Emergency

Nominal Size	Actual Size	Capacity (CFM)			Standard Capacity			Media Area
		@300	@500	@625	@300 FPM	@500 FPM	@625 FPM	
12x24x2	11.38x 23.38 x 1.75	600	1000	1250	0.20	0.42	0.61	8.46
14x20x2	11.50 x 19.50 x 1.75	590	980	1220	0.20	0.42	0.61	8.56
14x25x2	13.50 x 24.50 x 1.75	730	1220	1525	0.20	0.42	0.61	10.7
15x20x2	14.50 x 19.50 x 1.75	630	1050	1310	0.20	0.42	0.61	9.06
16x20x2	15.50 x 19.50 x 1.75	670	1120	1400	0.20	0.42	0.61	9.57
16x24x2	15.50 x 23.50 x 1.75	800	1340	1670	0.20	0.42	0.61	11.48
16x25x2	15.50 x 24.50 x 1.75	840	1400	1750	0.20	0.42	0.61	11.96
18x24x2	17.50 x 23.50 x 1.75	900	1500	1875	0.20	0.42	0.61	13.85
20x20x2	19.50 x 19.50 x 1.75	840	1400	1750	0.20	0.42	0.61	12.08
20x24x2	19.50 x 23.50 x 1.75	1000	1670	2090	0.20	0.42	0.61	14.5
20x25x2	19.50 x 24.50 x 1.75	1040	1740	2170	0.20	0.42	0.61	15.1
24x24x2	23.38 x 23.38 x 1.75	1200	2000	2500	0.20	0.42	0.61	17.52
25x25x2	24.50 x 24.50 x 1.75	1310	2170	2720	0.20	0.42	0.61	18.88
12x24x4	11.38 x 23.38 x 3.75	600	1000	1250	0.15	0.33	0.49	13.98
16x20x4	15.50 x 19.50 x 3.75	670	1120	1400	0.15	0.33	0.49	15.89
16x25x4	15.50 x 24.50 x 3.75	840	1400	1750	0.15	0.33	0.49	19.86
18x24x4	17.50 x 23.38 x 3.75	900	1500	1875	0.15	0.33	0.49	21.18
20x20x4	19.50 x 19.50 x 3.75	840	1400	1750	0.15	0.33	0.49	19.06
20x24x4	19.50 x 23.38 x 3.75	1000	1670	2090	0.15	0.33	0.49	22.88
20x25x4	19.50 x 24.50 x 3.75	1050	1750	2170	0.15	0.33	0.49	23.83
24x24x4	23.38 x 23.38 x 3.75	1200	2000	2500	0.15	0.33	0.49	27.96

Slurry Flat Sheet Test—80ppm Toluene



The Koch Odorkleen 250 well exceeds adsorption values against typical slurry-type filters.



KOCHFILTER
PURE PERFORMANCE

8401 Air Commerce Drive, Louisville, KY 40219
 toll free: 800.757.5624 | phone: 502.634.4796 | Fax: 502.969.2364
 info@kochfilter.com | www.kochfilter.com