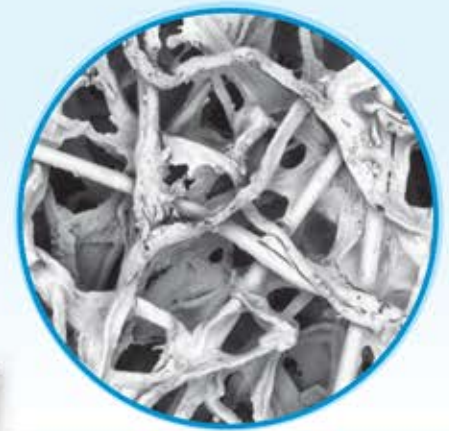


ICF-12M

70/30 Polyester and Cellulose

ICF-12M is a blended Polyester/Cellulose premium filter media with a non-phenolic resin system. One of the highest moisture resistant media's on the market, great cake release and great media strength.



Basis Weight	90lbs/3000 ft ²
Caliper	27 mils @ 2.7 psi
Air Permeability	27 cfm/ft ² @ 0.5 wc
Resin Content	18 %
Mullen Burst Dry	70 psi
Mullen Burst Wet	75 psi
Resin System	Non-Phenolic

Test Results

Airflow Rate (CFM)	500
Initial Resistance (in WG)	0.93
E1 (%) Initial Efficiency 0.30 - 1.0 μm	50
E2 (%) Initial Efficiency 1.0 - 3.0 μm	76
E3 (%) Initial Efficiency 3.0 - 10.0 μm	99
MERV*	MERV 12

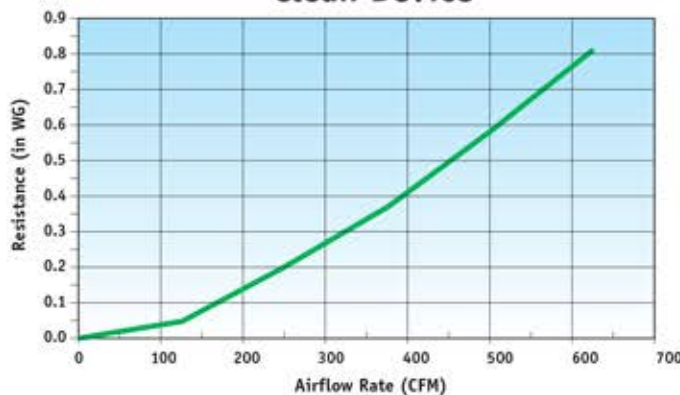
* Minimum Efficiency Reporting Value based on ASHRAE Test Standard 52.2-2007.



Typical Applications

- Abrasive Shot Blasting
- Battery Recycling
- Dry Chemical Processing
- Metal Grinding
- Mining
- Powder Paint

**Air Flow vs Resistance
Clean Device**



Initial Particle Size Removal Efficiency

